

**WELCOME**

*class of*

**2023**

**to Monty Tech's  
Freshman Acceptance Night**







# Montachusett Regional Vocational Technical School

Montachusett Reg. Vocational Technical School  
1050 Westminster Street  
Fitchburg, Massachusetts 01420-4696

978-345-9200 (Fitchburg Calling Area)  
978-632-8889 (Gardner Calling Area)

---

## **Freshmen Acceptance Night** **June 6, 2019** **6:00pm**

- **Tom Browne, Principal** – Welcome, introductions and “Celebrating Vocational Education at Monty Tech”
- **Dr. Sheila Harrity, Superintendent** – Welcome to Monty Tech!
- **Christine Leamy, Dean of Admissions** – Transition from Admissions to Guidance
- **Victoria Zarozinski, Director of Student Support Services** – Student schedules, Freshman Orientation, IEPs, Guidance Counselors
- **Dayana Carlson, Assistant Principal** – 504s and Medical Form Reminder
- **Jim Hachey, Director of Vocational Programs** – Freshman Exploratory and Co-op
- **Christina Favreau, Director of Academic Programs** – Academic expectations & course assignments
  - Summer Reading
  - **Brent Hager, Math Liaison** – Summer Math Assignments
  - **Audra Marini, Title 1 Math Teacher** – Math Support
- **“Get Involved” video** - club tables in PAC lobby – info after meeting
- **1<sup>st</sup> Sgt. Paul Jornet and 1<sup>st</sup> Sgt. Shane Dillon** – MCJROTC Instructors
- **SkillsUSA**
- **“Bulldog Athletics!” video**
- **Dave Reid, Athletic Director** – Physicals, Conditioning, Fall Tryouts info
  - **Coaches** – tables in PAC Lobby – pick up info after meeting
- **Adjourn** – Monty Tech Administrators and Faculty available for questions



**2019-2020 CALENDAR – (shaded cell = no school) (split cell = half day) – FINAL – 5/15/19**

|       |  |                       |          |          |          |           |          |          |
|-------|--|-----------------------|----------|----------|----------|-----------|----------|----------|
| 19,20 | New Teacher Orientation                | <b>AUGUST '19 (3)</b> |          |          |          |           |          |          |
| 20,21 | New Student Orientation                | <b>S</b>              | <b>M</b> | <b>T</b> | <b>W</b> | <b>Th</b> | <b>F</b> | <b>S</b> |
|       | Grade 9 Portraits Taken                |                       |          |          |          | 1         | 2        | 3        |
| 21    | Grade 9/New Student PARENT Orientation | 4                     | 5        | 6        | 7        | 8         | 9        | 10       |
| 26    | Staff Orientation                      | 11                    | 12       | 13       | 14       | 15        | 16       | 17       |
| 27    | Prof Dev (No School)                   | 18                    | 19       | 20       | 21       | 22        | 23       | 24       |
| 28    | Students' First Day                    | A                     | 26       | 27       | 28       | 29        | 30       | A        |

|  |  |                          |          |          |          |           |          |          |       |                             |
|--|--|--------------------------|----------|----------|----------|-----------|----------|----------|-------|-----------------------------|
|  |  | <b>FEBRUARY '20 (15)</b> |          |          |          |           |          |          | 5,6   | MCAS Biology Retest         |
|  |  | <b>S</b>                 | <b>M</b> | <b>T</b> | <b>W</b> | <b>Th</b> | <b>F</b> | <b>S</b> | 12    | Advisory Dinner             |
|  |  |                          |          |          |          |           |          |          | 13    | Advisory Dinner (Snow Date) |
|  |  | B                        | 3        | 4        | 5        | 6         | 7        | B        | 17    | Presidents' Day             |
|  |  | A                        | 10       | 11       | 12       | 13        | 14       | A        | 17-21 | February Vacation           |
|  |  |                          | 17       | 18       | 19       | 20        | 21       |          |       |                             |
|  |  | B                        | 24       | 25       | 26       | 27        | 28       | B        |       |                             |

|    |                                 |                           |          |          |          |           |          |          |
|----|---------------------------------|---------------------------|----------|----------|----------|-----------|----------|----------|
| 2  | Labor Day                       | <b>SEPTEMBER '19 (20)</b> |          |          |          |           |          |          |
| 5  | Back to School Night            | <b>S</b>                  | <b>M</b> | <b>T</b> | <b>W</b> | <b>Th</b> | <b>F</b> | <b>S</b> |
| 23 | Grade 11 Portraits College Fair | B                         | 2        | 3        | 4        | 5         | 6        | B        |
| 30 | Grade 10 & 12 Portraits Taken   | A                         | 9        | 10       | 11       | 12        | 13       | A        |
|    |                                 | B                         | 16       | 17       | 18       | 19        | 20       | B        |
|    |                                 | A                         | 23       | 24       | 25       | 26        | 27       | A        |
|    |                                 | B                         | 30       |          |          |           |          |          |

|  |  |                       |          |          |          |           |          |          |       |                        |
|--|--|-----------------------|----------|----------|----------|-----------|----------|----------|-------|------------------------|
|  |  | <b>MARCH '20 (22)</b> |          |          |          |           |          |          | 2,4,5 | MCAS ELA Retest        |
|  |  | <b>S</b>              | <b>M</b> | <b>T</b> | <b>W</b> | <b>Th</b> | <b>F</b> | <b>S</b> | 6,9   | MCAS Math Retest       |
|  |  | A                     | 2        | 3        | 4        | 5         | 6        | A        | 11    | SKILLS Districts Comp  |
|  |  | B                     | 9        | 10       | 11       | 12        | 13       | B        | 18    | Open House             |
|  |  | A                     | 16       | 17       | 18       | 19        | 20       | A        | 19    | Open House (snow date) |
|  |  | B                     | 23       | 24       | 25       | 26        | 27       | B        | 13    | Prof Dev (half day)    |
|  |  | A                     | 30       | 31       |          |           |          |          | 24-25 | MCAS ELA               |

|    |                            |                         |          |          |          |           |          |          |
|----|----------------------------|-------------------------|----------|----------|----------|-----------|----------|----------|
| 3  | College Fair               | <b>OCTOBER '19 (21)</b> |          |          |          |           |          |          |
| 9  | Advisory Dinner            | <b>S</b>                | <b>M</b> | <b>T</b> | <b>W</b> | <b>Th</b> | <b>F</b> | <b>S</b> |
| 10 | Honor Roll Banquet         | B                       |          | 1        | 2        | 3         | 4        | B        |
| 11 | Principal & Counselors Day | A                       | 7        | 8        | 9        | 10        | 11       | A        |
| 14 | Columbus Day               | B                       | 14       | 15       | 16       | 17        | 18       | B        |
| 17 | Honor Roll Banquet         | A                       | 21       | 22       | 23       | 24        | 25       | A        |
| 21 | Tour Day (no school)       | B                       | 28       | 29       | 30       | 31        |          | B        |
| 21 | Career Awareness Night     |                         |          |          |          |           |          |          |
| 25 | Prof Dev (half day)        |                         |          |          |          |           |          |          |

|  |  |                       |          |          |          |           |          |          |          |                         |
|--|--|-----------------------|----------|----------|----------|-----------|----------|----------|----------|-------------------------|
|  |  | <b>APRIL '20 (16)</b> |          |          |          |           |          |          | 9        | Third Quarter Ends      |
|  |  | <b>S</b>              | <b>M</b> | <b>T</b> | <b>W</b> | <b>Th</b> | <b>F</b> | <b>S</b> | 10       | Good Friday(no school)  |
|  |  | A                     |          |          | 1        | 2         | 3        | A        | 15       | Superintendent's Dinner |
|  |  | B                     | 6        | 7        | 8        | 9         | 10       | B        | 20-24    | Spring Break            |
|  |  | A                     | 13       | 14       | 15       | 16        | 17       | A        | 30-May 2 | SKILLS State Comp       |
|  |  |                       | 20       | 21       | 22       | 23        | 24       |          |          |                         |
|  |  | B                     | 27       | 28       | 29       | 30        |          | B        |          |                         |

|       |                              |                          |          |          |          |           |          |          |
|-------|------------------------------|--------------------------|----------|----------|----------|-----------|----------|----------|
| 1     | First Quarter Ends and       | <b>NOVEMBER '19 (18)</b> |          |          |          |           |          |          |
| 6,7,8 | MCAS ELA Retest              | <b>S</b>                 | <b>M</b> | <b>T</b> | <b>W</b> | <b>Th</b> | <b>F</b> | <b>S</b> |
| 5     | Portraits for Absentees      |                          |          |          |          |           | 1        | B        |
| 11    | Veterans Day                 | A                        | 4        | 5        | 6        | 7         | 8        | A        |
| 19    | Parents' Night(half day)     | B                        | 11       | 12       | 13       | 14        | 15       | B        |
| 13,14 | MCAS Math Retest             | A                        | 18       | 19       | 20       | 21        | 22       | A        |
| 21    | Parents' Night (half day)    | A                        | 25       | 26       | 27       | 28        | 29       | A        |
| 24-26 | SKILLS Leadership Conference |                          |          |          |          |           |          |          |
| 27    | Half Day School              |                          |          |          |          |           |          |          |
| 28    | Thanksgiving Day             |                          |          |          |          |           |          |          |

|  |  |                     |          |          |          |           |          |          |            |                       |
|--|--|---------------------|----------|----------|----------|-----------|----------|----------|------------|-----------------------|
|  |  | <b>MAY '20 (20)</b> |          |          |          |           |          |          | AP Testing | –see schedule On back |
|  |  | <b>S</b>            | <b>M</b> | <b>T</b> | <b>W</b> | <b>Th</b> | <b>F</b> | <b>S</b> | 9          | Prom                  |
|  |  |                     |          |          |          |           | 1        | B        | 15         | Sr. Sign-out Academic |
|  |  | A                   | 4        | 5        | 6        | 7         | 8        | A        | 19,20      | MCAS Math Test        |
|  |  | B                   | 11       | 12       | 13       | 14        | 15       | B        | 22         | Senior Sign-out Voc.  |
|  |  | A                   | 18       | 19       | 20       | 21        | 22       | A        | 25         | Memorial Day          |
|  |  | B                   | 25       | 26       | 27       | 28        | 29       | B        | 26         | Senior Awards Night   |
|  |  |                     |          |          |          |           |          |          | 27         | Graduation            |
|  |  |                     |          |          |          |           |          |          | 28         | Graduation rain date  |

|       |                     |                          |          |          |          |           |          |          |
|-------|---------------------|--------------------------|----------|----------|----------|-----------|----------|----------|
| 13    | Prof Dev (half day) | <b>DECEMBER '19 (15)</b> |          |          |          |           |          |          |
| 23-31 | Winter Break        | <b>S</b>                 | <b>M</b> | <b>T</b> | <b>W</b> | <b>Th</b> | <b>F</b> | <b>S</b> |
|       |                     | B                        | 2        | 3        | 4        | 5         | 6        | B        |
|       |                     | A                        | 9        | 10       | 11       | 12        | 13       | A        |
|       |                     | B                        | 16       | 17       | 18       | 19        | 20       | B        |
|       |                     |                          | 23       | 24       | 25       | 26        | 27       |          |
|       |                     |                          | 30       | 31       |          |           |          |          |

|  |  |                     |          |          |          |           |          |          |       |   |
|--|--|---------------------|----------|----------|----------|-----------|----------|----------|-------|---|
|  |  | <b>JUNE '20 (9)</b> |          |          |          |           |          |          | 2,3   | MCAS Biology Test                           |
|  |  | <b>S</b>            | <b>M</b> | <b>T</b> | <b>W</b> | <b>Th</b> | <b>F</b> | <b>S</b> | 3     | Advisory Dinner                             |
|  |  | A                   | 1        | 2        | 3        | 4         | 5        | A        | 4     | Freshmen                                    |
|  |  | B                   | 8        | 9        | 10       | 11        | 12       | B        |       | Acceptance Night                            |
|  |  | A                   | 15       | 16       | 17       | 18        | 19       | A        | 11    | Last day of School if No snow cancellations |
|  |  | 21                  | 22       | 23       | 24       | 25        | 26       | 27       | 22-26 | SKILLS Nat'l Comp                           |
|  |  | 28                  | 29       | 30       |          |           |          |          |       |   |

|       |                           |                         |          |          |          |           |          |          |
|-------|---------------------------|-------------------------|----------|----------|----------|-----------|----------|----------|
| 1     | New Year's Day(no school) | <b>JANUARY '20 (21)</b> |          |          |          |           |          |          |
| 13-17 | Mid-terms Gr 9 & 11       | <b>S</b>                | <b>M</b> | <b>T</b> | <b>W</b> | <b>Th</b> | <b>F</b> | <b>S</b> |
| 21-24 | Mid-terms Gr 10 & 12      |                         |          |          | 1        | 2         | 3        | A        |
| 20    | M.L. King Day(no school)  | B                       | 6        | 7        | 8        | 9         | 10       | B        |
| 24    | Second Quarter Ends       | A                       | 13       | 14       | 15       | 16        | 17       | A        |
| 27    | Begin Semester 2          | B                       | 20       | 21       | 22       | 23        | 24       | B        |
|       |                           | A                       | 27       | 28       | 29       | 30        | 31       | A        |

**MT 2019-2020 School Year  
Monty Tech**

| <u>Interim Progress Report Dates</u>                              | <u>Marking Period Ends</u>                                     |
|---|--|
| Interim Progress Report 1 <sup>st</sup> Period September 27, 2019 | 1 <sup>st</sup> Marking Period November 1, 2019                |
| Interim Progress Report 2 <sup>nd</sup> Period December 6, 2019   | 2 <sup>nd</sup> Marking Period January 24, 2020                |
| Interim Progress Report 3 <sup>rd</sup> Period February 28, 2020  | 3 <sup>rd</sup> Marking Period April 9, 2020                   |
| Interim Progress Report 4 <sup>th</sup> Period May 1, 2020        | 4 <sup>th</sup> Marking Period SENIORS May 15, 2020 Academic   |
|   | 4 <sup>th</sup> Marking Period SENIORS May 22, 2020 Vocational |
|   | 4 <sup>th</sup> Marking Period June 11, 2020                   |

| <u>PRE-EXPLORATORY/EXPLORATORY (B weeks)</u> | <u>DATES:</u>                      |
|--|------------------------------------|
| Pre Exploratory                              | Sept. 3,4,5,6 (4 days)             |
| Exploratory 1                                | Sept. 16,17,18,19,20 (5 days)      |
| Exploratory 2                                | Sept. 30, Oct. 1,2,3,4 (5 days)    |
| Exploratory 3                                | Oct. 15,16,17,18 (4 days)          |
| Exploratory 4                                | Oct. 28,29,30,31 Nov. 1 (4.5 days) |
| Exploratory 5                                | Nov. 12,13,14,15 (4 days)          |
| Exploratory 6                                | Dec. 2,3,4,5,6 (5 days)            |
| Exploratory 7                                | Dec. 16,17,18,19,20 (5 days)       |
| Exploratory 8                                | Jan 6,7,8,9,10 (5 days)            |
| Exploratory 9                                | Jan. 21,22,23,24 (4 days)          |

| <b>AP EXAM SCHEDULE</b> |                                  |
|-------------------------|----------------------------------|
| May 11, 2020            | Environmental Science            |
| May 6, 2020             | English Literature & Composition |
| May 7, 2020             | Chemistry                        |
| May 15, 2020            | Computer Science Principles      |
| May 5, 2020             | Calculus                         |
| May 13, 2020            | English Language & Composition   |
| May 15, 2020            | Statistics                       |

**\*\*MCAS:**

Since many of the MCAS tests are going to be computer based this year, DESE has provided Secondary Administration Dates just in case there are technology related issues that arise during the Primary Administration Dates. These secondary dates are as follows:

ELA Session 1 – Thursday, March 26  
ELA Sessions 2 – Friday, March 27

Mathematics Session 1 – Thursday, May 21  
Mathematics Session 2 – Friday, May 22

Biology Session 1 – Thursday, June 4  
Biology Session 2 – Friday, June 5

Subject to Department of Education Regulations.

**All dates are tentative, based on current information and may change due to unforeseen circumstances.**

# EXPLORATORY REQUIREMENTS 2019-2020

## STUDENT ID's & AGENDAS ARE REQUIRED IN ALL VOCATIONAL PROGRAMS

### **AUTO BODY-COLLISION REPAIR**

SNEAKERS OR WORK BOOTS  
SAFETY GLASSES  
PEN & PENCIL  
JEANS OR WORK PANTS  
WORKSHIRT OR T-SHIRT  
HAIR RESTRAINT  
NO NYLON CLOTHING  
NO LOOSE/TORN CLOTHING

**AUTO TECHNOLOGY**  
SNEAKERS OR WORK BOOTS  
SAFETY GLASSES  
LONG PANTS/JEANS OR WORK PANTS  
T-SHIRT  
HAIR RESTRAINT  
WRITING UTENSIL  
NO LOOSE/TORN OR NYLON CLOTHING

### **BUSINESS TECHNOLOGY**

WRITING UTENSIL  
NOTEBOOK  
SAFETY GLASSES  
NO OPEN TOED SHOES/SANDALS

### **CABINETMAKING**

SNEAKERS  
SAFETY GLASSES  
LONG PANTS/T-SHIRT  
HAIR RESTRAINT  
PENCIL  
NO LOOSE/TORN CLOTHING

### **CAD/DRAWING & DESIGN**

SAFETY GLASSES  
WRITING UTENSIL  
NO OPEN TOED SHOES/SANDALS

### **COSMETOLOGY**

WRITING UTENSIL  
NOTEBOOK  
RUBBER SOLED SHOES/NO HEELS  
NO SHORTS/NO LEGGINGS  
NO OPEN TOED SHOES/SANDALS

**CULINARY ARTS**  
SNEAKERS  
WRITING UTENSIL  
LONG PANTS  
HAIR RESTRAINT  
SOCKS MUST BE WORN  
NO TANK TOPS  
NO OPEN TOED SHOES/SANDALS

### **DENTAL ASSISTING**

HAIR RESTRAINT  
WRITING UTENSIL  
SAFETY GLASSES  
NO OPEN TOED SHOES/SANDALS

### **EARLY CHILDHOOD EDUCATION**

PEN & PENCIL  
CHROMEBOOK  
NO OPEN TOED SHOES/SANDALS

### **ELECTRICAL**

SNEAKERS OR WORK BOOTS  
SAFETY GLASSES  
LONG PANTS/T-SHIRT  
WRITING UTENSIL  
HAIR RESTRAINT/NO JEWELRY  
SMALL STUDDED EARRINGS ONLY  
NO LOOSE/TORN CLOTHING

### **ENGINEERING TECHNOLOGY**

NOTEBOOK  
SAFETY GLASSES

### **GRAPHIC COMMUNICATIONS**

NOTEBOOK  
WRITING UTENSIL  
NO OPEN TOED SHOES/SANDALS

### **HEALTH OCCUPATIONS**

WRITING UTENSIL  
NOTEBOOK  
SAFETY GLASSES  
HAIR RESTRAINT/NO JEWELRY  
NO OPEN TOED SHOES/SANDALS  
NO LOOSE/TORN CLOTHING  
NO LEGGINGS/SWEATPANTS/YOGA PANTS

### **HOUSE CARPENTRY**

SNEAKERS OR WORK BOOTS  
SAFETY GLASSES  
LONG PANTS/T-SHIRT  
HAIR RESTRAINT  
NO LOOSE/TORN CLOTHING  
NO LEGGINGS/SWEATPANTS/YOGA PANTS

### **HVAC & PROPERTY MAINTENANCE**

SNEAKERS OR WORK BOOTS  
PEN & PENCIL  
SAFETY GLASSES  
LONG PANTS/T-SHIRT  
HAIR RESTRAINT  
NO LOOSE/TORN CLOTHING

### **INFORMATION TECHNOLOGY**

PEN & PENCIL  
SAFETY GLASSES  
NOTEBOOK  
NO OPEN TOED SHOES/SANDALS

### **MACHINE TECHNOLOGY**

SNEAKERS  
SAFETY GLASSES  
LONG PANTS/T-SHIRT  
HAIR RESTRAINT  
NO LOOSE/TORN CLOTHING

### **MASONRY**

SNEAKERS OR WORK BOOTS  
SAFETY GLASSES  
LONG PANTS/T-SHIRT  
HAIR RESTRAINT  
NO LOOSE/TORN CLOTHING

### **PLUMBING**

SNEAKERS OR WORK SHOES ONLY  
SAFETY GLASSES  
SHORT SLEEVE/LONG SLEEVE T-SHIRT ONLY  
JEANS OR WORKPANTS ONLY  
HAIR RESTRAINT  
NO LOOSE/TORN CLOTHING

### **VETERINARY SCIENCE**

WRITING UTENSIL  
NOTEBOOK  
SAFETY GLASSES  
HAIR RESTRAINT/NO JEWELRY  
NO OPEN TOED SHOES/SANDALS

### **WELDING/METAL FAB**

SNEAKERS OR LEATHER BOOTS  
SAFETY GLASSES  
COTTON LONG SLEEVE T-SHIRT  
LONG PANTS/JEANS OR WORK PANTS  
HAIR RESTRAINT  
NO LOOSE/TORN CLOTHING  
NO NYLON OR RAYON CLOTHING

For all shops: No Tank Tops or sleeveless shirts, shoulders and stomach must be covered, sneakers (no open toed shoes/sandals/slippers) must be worn unless specified. \*See the Student Agenda Book for more safety requirements.

Students may be required to wear work boots once placed into permanent shops.



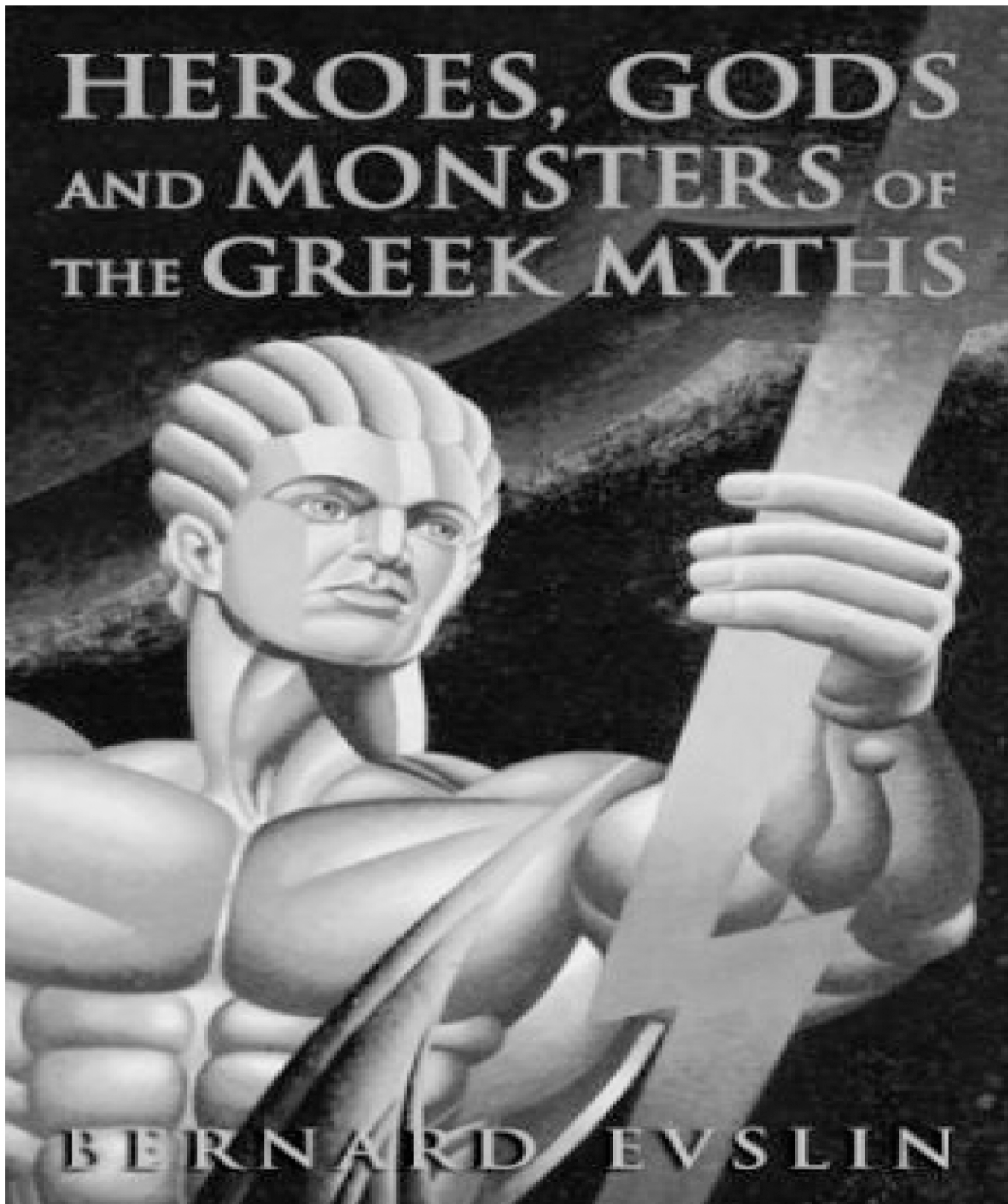


## ACADEMIC PROGRAM 2019-2020

| Grade 9   | Grade 10  | Grade 11  | Grade 12  |
|---|---|---|---|
| <b>English</b>  |   |   |   |
| EN190 English 9 (Pre-AP)<br>EN172 English 9<br>EN131 English 9      | EN290 English 10 (Pre-AP)<br>EN272 English 10<br>EN231 English 10   | EN398 AP Language & Composition (AP)<br>EN390 English 11 (H)<br>EN372 English 11<br>EN331 English 11  | EN499 AP Literature & Composition (AP)<br>EN490 English 12 (H)<br>EN472 English 12<br>EN431 English 12  |
| <b>Math (*semester courses)</b>                                     |   |   |   |
| MA192 Algebra II (H)<br>MA171 Algebra I<br>MA141 Algebra IA         | MA295 Geometry (H)<br>MA276 Geometry<br>MA245 Algebra IB  | MA397 Pre-Calculus (H)<br>MA382 Algebra II<br>MA381 Discrete Math<br>MA354 Algebra IIA<br>MA356 Geometry  | MA490 AP Calculus (AP)<br>MA499 AP Statistics (AP)<br><br>MA487 Pre-Calculus<br>MA482 Algebra II<br>MA483/484 Intro to Trig. & Intro. to Stats*<br>MA451 Modeling in Algebra IIB<br>MA434 Modeling in Financial Literacy  |
| <b>Science (*semester courses)</b>                                  |   |   |   |
| SC190 Biology (H)<br><br>SC172 Biology<br><br>SC151 Biology, Part I | SC295 Chemistry (Pre-AP)<br><br>SC285 Chemistry<br>SC266 Environ. Science<br><br>SC254 Biology, Part II<br>SC236 Environ. Science | SC397 AP Chemistry (AP)<br>SC399 AP Environmental Science (AP)<br>SC394 P.O. Biomedical Science (PLTW)<br><br>SC391 Physics (H)<br>SC393 Anatomy & Physiology (H)<br><br>SC385 Chemistry<br>SC381 Physics<br>SC383 Anatomy & Physiology<br><br>SC338 Applied Chemistry<br>SC341 Applied Physics<br>SC343 Anatomy & Physiology | SC497 AP Chemistry (AP)<br>SC500/SC501 Biology I & Intro to Biotech (DE)*<br>SC490 Human Body Systems (PLTW)<br><br>SC491 Physics (H)<br>SC493 Anatomy & Physiology (H)<br><br>SC485 Chemistry<br>SC481 Physics<br>SC483 Anatomy & Physiology<br>SC466 Environmental Science<br>SC473 Zoology and Botany<br><br>SC438 Applied Chemistry<br>SC441 Applied Physics<br>SC443 Anatomy & Physiology<br>SC436 Environmental Science |

| <b>Social Studies (*semester courses)</b>   |   |  |  |
|---|---|--|--|
| SS191 U.S. History I (H)  | SS292 U.S. History II (H)   | SS393 U.S. History III (H)   | SS494 World History (H)*<br>SS490 Cultural Studies (H)*<br>SS495 Law & Society (H)*  |
| SS171 U.S. History I  | SS272 U.S. History II   | SS373 U.S. History III   | SS484 World History*<br>SS465 Law & Society*   |
| SS131 U.S. History I  | SS232 U.S. History II   | SS333 U.S. History III   | SS454 World History*<br>SS425 Law & Society*   |
| <b>Physical Education (semester electives)</b>  |   |  |  |
| PE130 Phys. Educ./Health 9<br>EL60A Yoga & Med. Art 9   | PE230 Physical Educ./Health 10<br>EL60B Yoga & Med. Art 10  | PE331 Physical Education 11<br>PE332 Personal Fitness 11<br>PE333 Pilates 11<br>EL61A Yoga & Meditative Art 11   | PE431 Physical Education 12<br>PE432 Personal Fitness 12<br>PE433 Pilates 12<br>EL61B Yoga & Meditative Art 12   |
| <b>Spanish (year-long electives)</b>  |   |  |  |
| EL172 Spanish I<br>EL173 Spanish II   | EL272 Spanish I<br>EL273 Spanish II<br>EL274 Spanish III  | EL372 Spanish I<br>EL373 Spanish II<br>EL374 Spanish III   | EL473 Spanish II<br>EL474 Spanish III  |
| <b>Electives</b>  |   |  |  |
| <b>Semester Electives</b><br>EL54A Visual Arts I<br>BU150 Freshmen Seminar<br>EL100 Leadership Ed. IA<br>EL101 Leadership Ed. IB<br><br><b>Year-long Electives</b><br>EL110 Math Lab<br>EL111 Writing Lab<br>EL121S Learning Support<br>EL611A ESL 1<br>EL612A ESL 2<br>EL613A ESL 3<br>EL614A ESL 4<br>EL615A ESL5 | <b>Semester Electives</b><br>EL54B Visual Arts I<br>EL55B Visual Arts II<br>EL244 Personal Finance<br>EL200 Leadership Ed. IIA<br>EL201 Leadership Ed. IIB<br>EL231 Directed Study<br><br><b>Year-long Electives</b><br>EL210 Math Lab<br>EL211 Writing Lab<br>EL221S Learning Support<br>EL611B ESL 1<br>EL612B ESL 2<br>EL613B ESL 3<br>EL614B ESL 4<br>EL615B ESL5 | <b>Semester Electives</b><br>EL54A Visual Arts I<br>EL55A Visual Arts II<br>EL344 Personal Finance<br>EL300 Leadership Ed. IIIA<br>EL301 Leadership Ed. IIIB<br>EL331 Directed Study<br><br><b>Year-long Electives</b><br>EL321 Learning Support<br>EL321S Learning Support<br>EL611A ESL 1<br>EL612A ESL 2<br>EL613A ESL 3<br>EL614A ESL 4<br>EL615A ESL5 | <b>Semester Electives</b><br>EL54B Visual Arts I<br>EL55B Visual Arts II<br>EL444 Personal Finance<br>EL400 Leadership Ed. IVA<br>EL401 Leadership IVB<br>EL431 Directed Study<br><br><b>Year-long Electives</b><br>EL421 Learning Support<br>EL421S Learning Support<br>EL611B ESL 1<br>EL612B ESL 2<br>EL613B ESL 3<br>EL614B ESL 4<br>EL615B ESL5 |

# Freshman Summer Reading



All entering freshmen will read *Heroes, Gods and Monsters* by Bernard Evslin (Lexile: 800).

Myths are designed to be didactic (intended to teach). In a well-written analysis, discuss at least two lessons the myths attempt to teach about humanity and the world surrounding it and how the narrator achieves this purpose.

<https://montytech.libguides.com/summerreading>



# Lexile® Measures and Grade Levels



## The Lexile® Framework for Reading

### Q: Is it possible to tie grade levels to Lexile® measures?

A: There is no direct correspondence of a specific Lexile measure to a specific grade level. Within any classroom or grade, there will be a range of readers and a range of reading materials. For example, in a fifth-grade classroom there will be some readers who are ahead of the typical reader (about 250L above) and some readers who are behind the typical reader (about 250L below). To say that some books are “just right” for fifth graders assumes that all fifth graders are reading at the same level. The Lexile Framework for Reading is intended to match readers with texts at whatever level the reader is reading.

MetaMetrics® has studied the ranges of Lexile reader measures and Lexile text measures at specific grades in an effort to describe the typical Lexile measures of students and the typical Lexile measures of texts of a given grade level. *This information is for descriptive purposes only and should not be interpreted as a prescribed guide about what an appropriate Lexile reader measure or Lexile text measure should be for a given grade.* Data for the Lexile reader measures came from a national sample of students. Table 1 shows the middle 50% of Lexile reader measures. The middle 50% is called the interquartile range. The lower number in each range marks the 25th percentile of readers, and the higher number in each range marks the 75th percentile of readers. It is important to note that 25% of students in the study had Lexile measures below the lower number and 25% had Lexile measures above the higher number.

Data for Lexile text measures came from collections found in various grade-level classrooms. The text measures from this research can be found at Lexile.com ([www.lexile.com/about-lexile/grade-equivalent/grade-equivalent-chart](http://www.lexile.com/about-lexile/grade-equivalent/grade-equivalent-chart)). Additional research identified a gap between the reading demands of high school and those of postsecondary endeavors (Williamson, 2008). A “stretch” text continuum was developed to help identify a pathway of text demand that would effectively close the high school and postsecondary text demand gap (Sanford-Moore & Williamson, 2012). The text complexity bands and associated ranges in the supplementary information to the Common Core State Standards, Appendix A were informed by this and other research. Table 1 shows the grade-specific bands based on the Common Core Lexile text measures for each grade.

Notice that there is considerable overlap between the grades. This is typical of student reading levels and texts published for each grade. In addition, the level of support

Table 1: Typical Lexile Reader and Text Measures by Grade

| Grade   | Lexile Reader Measures<br>(Interquartile <sup>1</sup> Range, Mid-Year) | 2012 CCSS Text Measures <sup>2</sup> |
|---------|--|--------------------------------------|
| 1       | Up to 300L   | 190L to 530L                         |
| 2       | 140L to 500L   | 420L to 650L                         |
| 3       | 330L to 700L   | 520L to 820L                         |
| 4       | 445L to 810L   | 740L to 940L                         |
| 5       | 565L to 910L   | 830L to 1010L                        |
| 6       | 665L to 1000L  | 925L to 1070L                        |
| 7       | 735L to 1065L  | 970L to 1120L                        |
| 8       | 805L to 1100L  | 1010L to 1185L                       |
| 9       | 855L to 1165L  | 1050L to 1260L                       |
| 10      | 905L to 1195L  | 1080L to 1335L                       |
| 11 & 12 | 940L to 1210L  | 1185L to 1385L                       |

<sup>1</sup> Interquartile is the range between the upper and lower quartiles (i.e., the middle 50 percent of a distribution) and is equal to the difference between the 75th and 25th percentile.

<sup>2</sup> Common Core State Standards for English Language Arts, Appendix A (additional information), NGA and CCSSO, 2012

provided during reading and reader motivation have an impact on the reading experience. Students who are interested in reading about a specific topic (and are therefore motivated) often are able to read text at a higher level than would be forecasted by the reader's Lexile measure.

Although a student may be an excellent reader, it is incorrect to assume that he/she will comprehend text typically found at (and intended for) a higher grade level. A high Lexile measure for a student in one grade indicates that the student can read grade-level-appropriate materials at a very high comprehension rate. The student may not have the background knowledge or maturity to understand material written for an older audience. It is always necessary to preview materials prior to selecting them for a student.

It is important to note that a book's Lexile measure refers to its text difficulty only. A Lexile measure does not address the content or quality of the book. Lexile measures are based on two well-established predictors of how difficult a text is to comprehend: word frequency and sentence length. Many other factors affect the relationship between a reader and a book, including its content, the age and interests of the reader, and the design of the actual book. The Lexile measure is a good starting point in your book-selection process, with these other factors then being considered.

The real power of the Lexile Framework is in matching readers to text—no matter where the reader is in the development of his/her reading skills—and in examining reader growth. When teachers know Lexile reader measures and Lexile text measures, they can match their students with the texts that will maximize learning and growth.

For more information, call 1-888-LEXILES  
or visit [www.Lexile.com](http://www.Lexile.com).

METAMETRICS®, the METAMETRICS® logo and tagline, LEXILE®, LEXILE® FRAMEWORK, LEXILE® ANALYZER and the LEXILE® logo are trademarks of MetaMetrics, Inc., and are registered in the United States and abroad. The trademarks and names of other companies and products mentioned herein are the property of their respective owners. Copyright © MetaMetrics, Inc. All rights reserved.



# 9 things to know BEFORE 9<sup>TH</sup> GRADE

## 1 I.C.E.

Citing sources in the information age is important to avoid plagiarism. It also helps support your evidence.

- I- Introduce evidence
- C- Cite it
- E- Explain it (why is it important?)

## 2 Thesis Statement

What do they do? Where do they go in an essay?  
How do I write one with the formula?

BY EXAMINING X,Y,AND Z,IT IS CLEAR THAT\_\_\_\_\_.

## 3 ARGUMENT

How do you write one? What are the parts? How do you know if it's good?

CLAIM  
EVIDENCE  
COUNTER-CLAIM  
REFUTE  
REBUTTAL

## 4 Essay STRUCTURE

INTRODUCTION

Hook, intro topic, THESIS

CONCLUSION

Wrap up, SO WHAT?

## 5 Theme vs. TOPIC

**THEME:** the moral, lesson learned, or statement about life and how we behave.

**TOPIC:** what the article, story, poem, etc, is about LITERALLY.

## 7 SENTENCE STRUCTURE

What are the types of sentences?

S CD CX CD-CX

## 8 Clauses

**INDEPENDENT**

S, V, complete thought

**DEPENDENT**

S, V, incomplete thought

## 9 ANNOTATE

- \* What is annotation?
- ! How can it help you make a sense of a text?
- ?
- +

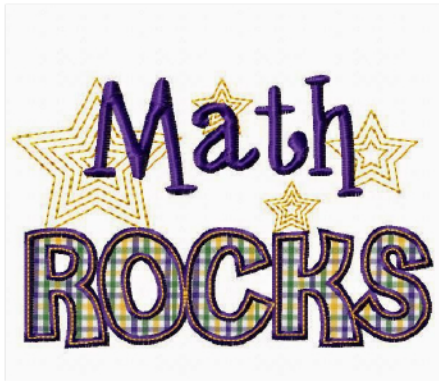
## 6 Rhetorical STRATEGIES

What are they? Why do writers/speakers use them?

**ETHOS** - appeal to speaker's credibility

**PATHOS** - appeal to emotions

**LOGOS** - appeal to logic



## **Monty Tech Summer Math**

**All incoming freshman students are required to complete Summer Math Assignments**

### **Why Summer Math?**

The purpose of these assignments is:

- to keep student's math skills fresh over the summer months
- to better prepare students to be successful in their next level of math
- provide teachers with a "math profile" of each student in order to provide support.

### **Will the assignments be graded?**

Yes. These assignments will be graded for effort only, meaning that 100% completion means a grade of 100%! Grades on individual assignments will be used only to address any gaps in math skills.

### **How do I create an ASSISTments account?**

All assignments will be accessed and completed online using a free computer based tutoring program called ASSISTments. You will need to create an ASSISTments account if you don't already have one. See the attached instructions for creating an account or using an account that you already have from middle school.

You can also get help online at (website address is case sensitive): **[bit.ly/mt-assistments](https://bit.ly/mt-assistments)**

### **How do I access the assignments?**

After you've logged into your ASSISTments account, click on the folder titled "ALL Freshmen Required Math Assignments", you should see 12 assignments. *ALL freshmen must complete these 12 Assignments!* Make sure to complete #11 and #10 first, in order to know how use the system. See the Monty Tech ASSISTments Help Site ([bit.ly/mt-assistments](https://bit.ly/mt-assistments)) for additional guidance including a video explanation of Lessons #11 and #10, as well as some tech help with other lessons.

If you are an Honors student, the assignments in the second folder titled " Only Freshmen entering Algebra 2 Additional Summer Math Assignments" must be completed in addition to the first. Complete the "All freshman" assignments first.

### **What else do I need to know about Monty Tech summer math?**

Each assignment consists of a math topic skill builder. These skill builders require students to complete 3 problems correct in a row in order to be able to move onto the next assignment. If you are experiencing difficulty, there are hints and breaking it into steps features provide assistance. The system shuts off after 10 incorrect answers in a row and will not open up again until the next day for students to try again.

Each assignment will show a grade when completed, but this grade will only be used to address skill gaps and provide support. When all assignments are completed, students will receive a grade of 100% when beginning their math class in the fall. You may return to the list of assignments at any time by clicking on the “assignments” tab in the upper left-hand corner.

Upon completion of the summer math, please fill out a brief survey located at (website address is case sensitive): **[bit.ly/mt-assistments](http://bit.ly/mt-assistments)**

### **Problems or Questions?**

Contacts:

Mrs. Trundy, [trundy-alethea@montytech.net](mailto:trundy-alethea@montytech.net)

Mrs. Hall, [hall-melissa@montytech.net](mailto:hall-melissa@montytech.net)

Christina Favreau, Director of Academic Programs, 978-345-9200 ext. 5421 or [favreau-christina@montytech.net](mailto:favreau-christina@montytech.net)

***All Summer Math Assignments must be completed by 9/3/2019***

**Have A Great Summer ☺**



## Monty Tech Summer Math

### How do I access ASSISTments and create an account?

(Note: for 8th graders who already have an ASSISTments account, see instructions at the end of this guide)

### To Create a new ASSISTments account:



6. Scroll down to verify Class ("I will be entering 9th grade") and click OK.

**Verify Class Information**

State: Massachusetts  
District: Montachusett Regional Vocational Technical  
School: Montachusett Reg Voc Tech  
Teacher: Dr. Math

Class: I will be entering 9th Grade (2019-2020)

Section: Period 1

If the class information above is correct, click 'OK';  
if it is incorrect, check your code or talk to your teacher.

OK Enter A Different Code

Student Information

\* First Name: test

Middle Name:

\* Last Name: student 1

\* Birthdate: 2005 January 1

Email:

Confirm Email:

Time zone: America/New\_York Don't change the time zone

\* Password: \*\*\*\*

\* Confirm Password: \*\*\*\*

**Use the School Password: 1234**

\* Indicates a required field.  
Worcester Polytechnic Institute (WPI) pursues the science of learning. Online learners are important participants in that pursuit. The information we gather from your engagement with our instructional offerings makes it possible for faculty, researchers, designers and engineers to continuously improve their work and, in that process, build learning science.

By registering, you are also participating in research intended to enhance ASSISTments instructional offerings as well as the quality of learning and related sciences worldwide. In the interest of research, you may be exposed to some variations in normal instructional practices. WPI does not use learner data for any purpose beyond the University's stated missions of education and research. Personal identifiable information about students is never shared.

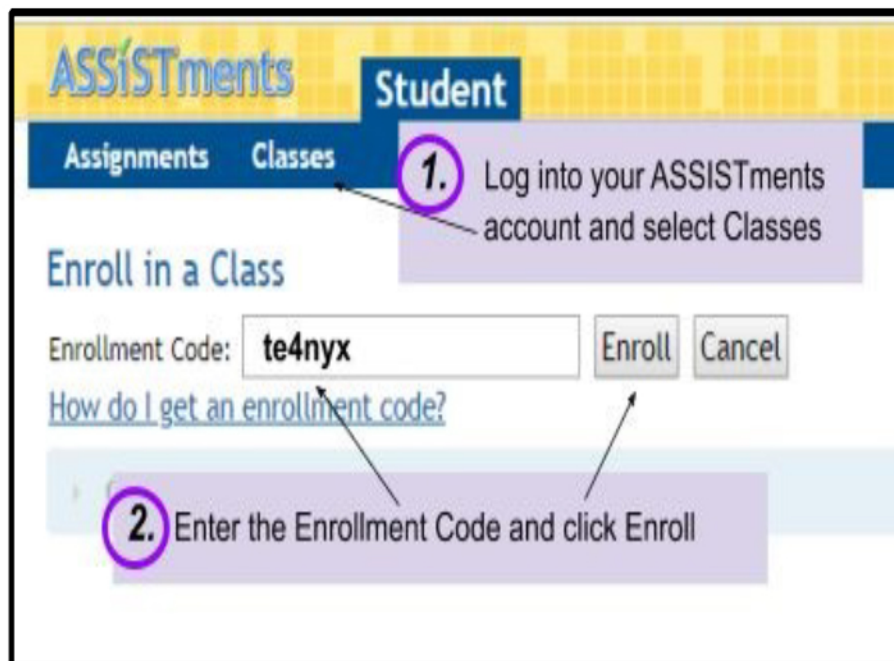
I have read and accepted the [Terms of Use](#) and [Privacy Policy](#)

Register

7. Fill in your student information, including your email address  
- You will be using a personal email, as you won't have your MT Gmail account yet.

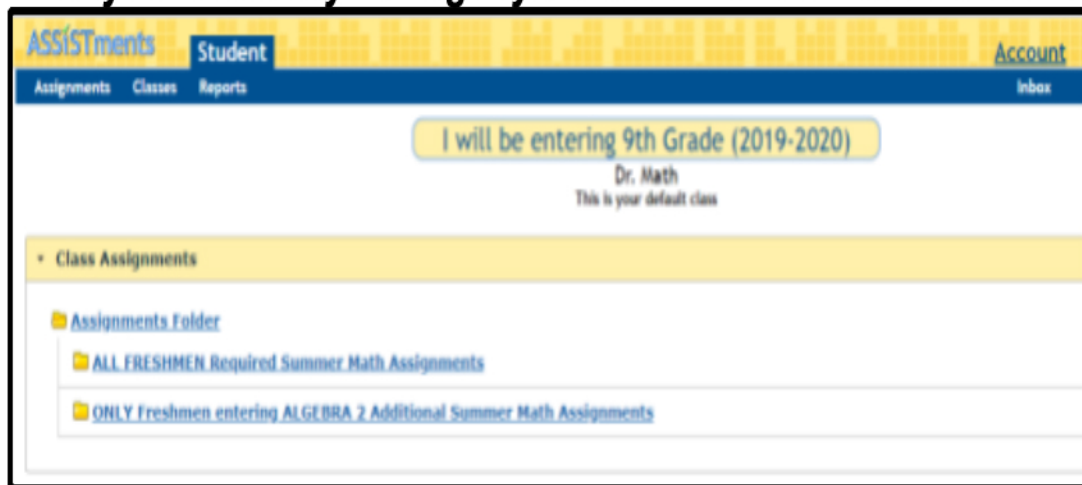
8. Check that you've read and accepted the Terms of Use and Privacy Policy then click Register

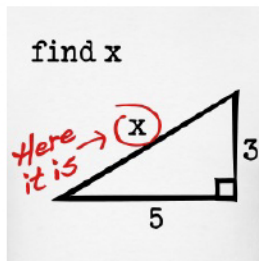
**For 8th graders who already have an ASSISTments account:**



\*\*\*\*\*

***All users: Your ASSISTments account is now enrolled in the MT course and you are ready to begin your summer math adventures!!***





# Math Lab

Teacher: Audra Marini

Email: [marini-audra@montytech.net](mailto:marini-audra@montytech.net)

This two year course is designed to provide supplemental academic support to eligible Title I students in math as well as extensive targeted instruction that will help prepare students to meet the proficiency score requirements of the state assessment (MCAS). Eligibility criteria are based on students' performance on standardized tests, placement test scores, and guidance counselor/teacher recommendations. For more information, please see your student's guidance counselor.

***These students will be taking the Next-Generation MCAS of which will be online. To prepare for this computerized test, we will be working with various educational technology tools to make sure the students are adequately prepared.***

***Freshmen Level:*** At the freshmen level, this course will focus on closing any gaps that the students may have in regards to their basic arithmetic skills. This solid foundation is critical in order to master future math skills. In addition, this course is designed to support the students with the content covered in their Algebra IA or Algebra I course.

The topics that Math Lab will cover during freshmen year include:

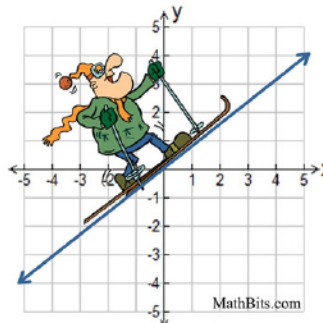
## ***Number & Quantity***

- Basic Arithmetic Skills
  - Add/Subtract/Multiply/Divide - integers, fractions, and decimals
  - Converting Fractions to Percents and vice versa
  - Rounding Numbers
- Order of Operations
- Square and Cube Roots
- Properties of Real Numbers



## ***Algebra & Functions (Part 1)***

- Multi-Step Equations
- Inequalities
- Evaluating Functions
- Slope of Lines
- Writing Linear Equations
- Graphing Linear Equations
- Systems of Equations
- Exponents Rules
- Operations with Polynomials



**Sophomore Level:** At the sophomore level, the primary focus is preparation for the state assessment (MCAS). Problem-solving strategies, open response questions, and test-taking techniques will accompany each unit throughout the course.

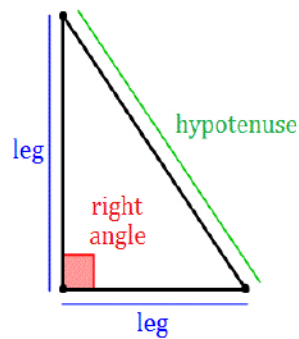
The topics that Math Lab will cover during sophomore year include:

### **Statistics & Probability**

- Summary Statistics (Mean, Median, Mode, Range)
- Interpreting Graphs (Pie Charts, Bar Graphs, Scatter Plots, Box-and-Whisker Plots, Histograms)
- Scatter Plots

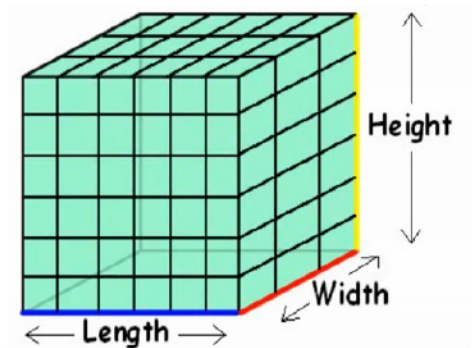
### **Geometry**

- Angle Pair Relationships
- Interior & Exterior Angles Triangles
- Pythagorean Theorem
- Special Right Triangles
- Right Triangle Trigonometry
- Similar Figures
- Distance & Midpoint Formulas
- Transformations (translations, reflections, rotations, dilations)
- Inscribed Angles in Circles



### **Geometric Measurements**

- Various 2-dimensional geometric figures
  - Area
  - Perimeter
- Various 3-dimensional geometric figures
  - Volume
  - Lateral Surface Area
  - Total Surface Area



### **Algebra & Functions (Part 2)**

- Arithmetic and Geometric
- Factoring
- Solving Quadratics

# NEW ACER CHROMEBOOK'S C731T NEXT YEAR



**CASES & CHARGERS WILL BE COMING  
TO THE SCHOOL STORE**

**SEE BACK FOR RULES & REGULATIONS**

## All incoming Freshmen will be receiving a school-owned Chromebook at the beginning of the school year.



- Chromebooks will be distributed to incoming freshmen, and newly enrolled students, within the first three weeks of the school year.
- Optional insurance will be offered for the Chromebooks for parents to purchase.
- Parents/Guardians and students are required to sign and return the Chromebook Agreement Form and Acceptable Use Policy.
- Technology will be used in your classes and you will be required to bring your Chromebook to class every day fully charged. Teachers will be using Google Classroom and other tools in class.
- Monty Tech's filtering software will be in place on the device during school as well as outside of school - it blocks websites that are inappropriate for students.
- You will be able to personalize your Chromebook by purchasing an optional case. You may put stickers and markings on your purchased case, because it is yours. All items must be appropriate and not violate any school policy or rule. Recommended cases will be available for purchase in the school store.
- Stickers and markings are NOT ALLOWED on the Chromebook itself.
- There will be a presentation about digital citizenship and appropriate social media usage for all students at the beginning of the school year. It will cover topics such as:
  - Common Sense on Social Networks
  - Internet Safety, Using the Internet Responsibly, Cyberbullying
  - How to Present and Protect Yourself Online
- Devices that are lost, stolen or vandalized need to be reported to the school's Dean of Students Office immediately - students will be required to submit a report.
- Technical support will be available through the Technology Department. Do not attempt to repair the device yourself.

# Helpful Monty Tech Apps

*Created by current Monty Tech students!*



<http://bit.ly/mt-extrahelp>

Use this app to help you look up when teachers are offering extra help.



[bit.ly/mt-clubs](http://bit.ly/mt-clubs)

Use this app to look up a description as well as meeting times and advisors for the clubs available at Monty Tech.

*Follow the link to these apps and you will then be able to download them onto your phone.*





# MONTY TECH MARINE CORPS JROTC

## PURPOSE

The purpose of the Monty Tech Marine Corps Junior Reserve Officer Training Corps (MCJROTC) program is to:

- Instill the values of leadership
- Citizenship
- Service to Country
- Personal responsibility and a sense of accomplishment

## THREE MAJOR OBJECTIVES

- Give students an appreciation for the origin, advantages, and responsibilities of leadership.
- Develop an understanding of leadership skills and the advantages of strong moral character.
- Develop in students a sense of pride, discipline, and personal responsibility.

We are not seeking to recruit for the military and MCJROTC does not obligate students to serve in the armed forces.

We strive to meet Monty Techs mission.

Stop into Student Support Services or the MCJROTC Classroom to ask about the chance to be part of one of Monty Tech's most exciting and demanding elective programs.

## ACTIVITIES

Cyber Security Team  
Marksmanship  
Drill Team  
Color Guard

## VOLUNTEER

Community Service  
Wreaths Across America  
Food Shelters  
Disaster Relief Efforts



## INSTRUCTORS

Senior Marine Instructor  
First Sergeant  
Paul Jorget  
USMC (Ret)  
Jorget  
[paul@montytech.net](mailto:paul@montytech.net)

Marine Instructor  
First Sergeant  
Shane Dillon  
USMC (Ret)  
Shane-  
[dillon@montytech.net](mailto:dillon@montytech.net)

## **UNIFORMS**

Cadets will wear the Marine Corps JROTC uniform one day per week. Uniforms are provided at no cost to the student for participation in the program.

## **PHYSICAL FITNESS**

Physical fitness training is conducted one day per week along with completion of the Youth Physical Fitness Test (YPFT) two times during the school year.

## **CLASSES**

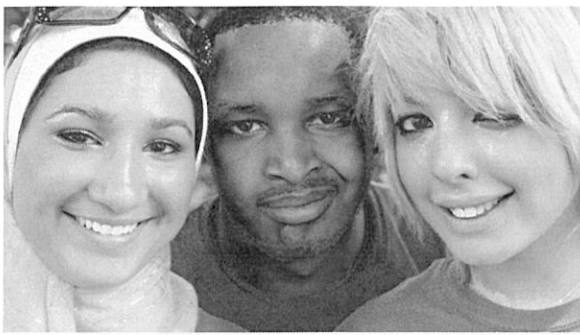
Classes will evolve around Leadership Education. The program is progressive with cadets moving from one school year to the next. Freshman Cadets will begin as a Leadership Education One (LE I) and make their way through LE II (Sophomore), LE III (Junior), and LE IV during Senior year. Each year builds on the previous year with additional knowledge and responsibility.

## **RANK**

Promotions occur through demonstrated potential along with consistent adherence to all MCJROTC rules and regulations. Some cadets will have the potential to progress through rank at an accelerated pace through routine demonstration of above average performance.

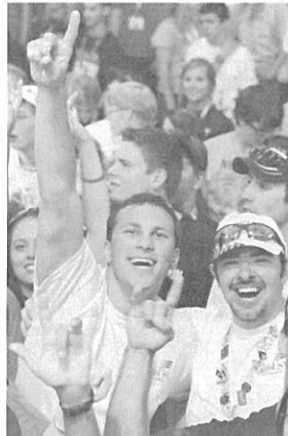
## **OPPORTUNITY**

Through the MCJROTC Leadership Program, Cadets are more confident and better prepared for their futures, no matter what direction they pursue in the trades, college, or military service.



## Competition

Do you like to compete for prizes, scholarships and awards? SkillsUSA offers countless opportunities to showcase skills in competitive events while earning recognition that looks great on a résumé. You can compete at the local, regional, state and national levels in areas applicable to your career choice. Not only will this help you learn to work under pressure, but it will also give you a competitive edge in the workplace. You'll also have an opportunity to meet and learn from industry professionals.



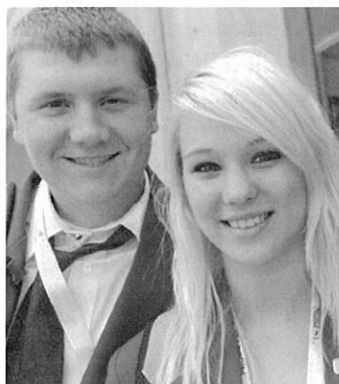
## Service to Others

There is nothing more fulfilling than helping others. That is why service is one of SkillsUSA's top priorities. You can truly make a difference on your campus or in the community by applying your knowledge and skills through service. The best part is, coming up with a service project is easy and rewarding. Together with other SkillsUSA members, you can share your time and energy to make a lasting difference in your corner of the world.



## Travel

Want to see new places and meet new people? SkillsUSA can put you on the road to a variety of destinations depending on your level of involvement. Competitions and leadership conferences can lead to local, state, national and even global travel. Not only is this exciting from a student perspective, but it prepares you for potential careers that require mobility and exposure to different types of people and cultures. If you're ready to broaden your horizons, SkillsUSA is ready to take you there!



## Teamwork

Effective teams are fundamental to the success of any organization. Employers seek individuals who effectively work together to accomplish a common goal. SkillsUSA is just the place to learn the fundamentals of teamwork including trust, flexibility, loyalty and conflict resolution. Join a SkillsUSA team and gain valuable experience while building new friendships!

## Fun Experiences

It has often been said that life is what you make of it. Much in the same way, SkillsUSA is all about making the most of a member's experience. The best part is, the process of learning new things, meeting new people and seeing new places involves a great deal of fun! What's more, you're in charge! Whether it's attending social activities, participating in competitions, volunteering for a community service project or providing leadership as an officer, you are the master of your SkillsUSA adventure. Do not let this opportunity for fun, learning and career development pass you by. The world of SkillsUSA awaits you ... seize the day!



## Leadership



### Why SkillsUSA?

SkillsUSA is a dynamic and career-oriented leadership organization focused on individual success at home, the classroom, the community and the workplace. Involvement in SkillsUSA can change your life.

Leadership is influence!

There is no better way to build leadership skills than to help others improve. Through SkillsUSA you can plan and implement a community service project, run for chapter office or compete in leadership development events. All of these experiences develop valuable leadership skills such as communication, decision making, group collaboration and problem solving.

### Scholarships

Pursuing higher education is costly. Whether you're attending a technical school, community college or university, expenses such as tuition, books and living expenses add up quickly. SkillsUSA members are eligible for more than \$600,000 in scholarships annually at the state and national level. In some cases, there are local scholarships as well. Not only can applying for scholarships lead to monetary awards, but the process also provides valuable experience in completing applications. Give yourself an opportunity to get ahead by taking advantage of the generous support available *only* to SkillsUSA members.



# Monty Tech SkillsUSA Leadership Team Application

Name \_\_\_\_\_ Age \_\_\_\_\_ Grade \_\_\_\_\_

Address \_\_\_\_\_ City \_\_\_\_\_ Zip \_\_\_\_\_

Home Phone # ( ) \_\_\_\_\_ Cell Phone # ( ) \_\_\_\_\_

Parents' or Guardians' Names \_\_\_\_\_

Technical Education Program \_\_\_\_\_ 1<sup>st</sup> Period Academic Teacher \_\_\_\_\_

Your school E-mail address \_\_\_\_\_

List participation in school and/or community organizations or activities:

---

---

---

Attach the following:

\_\_\_\_\_ **A statement** "Why you wish to be on the Monty Tech SkillsUSA Leadership Team"

\_\_\_\_\_ **A copy of Last Year's final report card** (if you do not have it, have your shop teacher print out your transcript, freshman may see Mrs. Reyes in guidance)

If selected to the Monty Tech SkillsUSA Leadership Team, I will attend and participate in:

~Leadership Training after school on **Wednesday, September 18th & Thursday September 19th**

~ All Leadership Team meetings which will be held on either Wednesday or Thursday of B week after school until 4 (to be determined) and activities

~ The Fall State Leadership Conference during November 24-26, 2019 (If selected)

\_\_\_\_\_  
Candidate's Signature

\_\_\_\_\_  
Date

-----

**We support and endorse this student's candidacy for a Monty Tech SkillsUSA Leadership Team.**

\_\_\_\_\_  
Candidate's Parent or Guardian Signature

\_\_\_\_\_  
Date

\_\_\_\_\_  
Candidate's Trade Instructor Signature  
(Grade 10-12 ONLY)

\_\_\_\_\_  
Date

**Due Wednesday, September 11th by 2:40**

**Mrs. Cataldo - (Early Childhood), Mr. Forhan - (Auto Body), Mr. Pelletier - (225)**

# MONTY TECH

## ATHLETIC CALENDAR

### 2019 – 2020

| DAY       | DATE     | EVENT  | TIME  | LOCATION               |
|-----------|----------|--|---|------------------------|
| Monday    | 8/12/19  | Monty Tech Fall Coaches Meeting  | 4:00 p.m.                                       | Rm. 3231               |
| Monday    | 8/12/19  | Fall - "Meet the Coaches Night"  | 6:00 p.m.                                       | Auditorium             |
| Friday    | 8/16/19  | Football – Conditioning  | *TBA  | Athletic Field         |
| Thursday  | 8/22/19  | All Fall Sports Start  | Check Fall<br>Newsletter<br>(available in July) | Athletic<br>Facilities |
| Wednesday | 10/23/19 | Winter Sport Sign-Ups  | Lunches   | Café                   |
| Thursday  | 10/24/19 | "  | "   | "                      |
| Tuesday   | 11/5/19  | Monty Tech Winter Coaches Meeting  | 5:00 p.m.                                       | Rm. 650                |
| Tuesday   | 11/12/19 | Winter - "Meet the Coaches Night"  | 6:00 p.m.                                       | Auditorium             |
| Thursday  | 11/14/19 | Fall Awards Night – Boys Soccer<br>Girls Soccer<br>Cross-Country<br>Golf<br>Field Hockey<br>Girls Volleyball | 6:00 p.m.                                       | Café/Auditorium        |

**AWARD NIGHTS MAY BE IN A GROUP OR SEPARATED BY TEAMS, IF THEY CHOOSE TO DO SO**

|           |         |  |         |                        |
|-----------|---------|--|---------|------------------------|
| Monday    | 12/2/19 | Winter Sports Start                          | TBA     | Athletic<br>Facilities |
| Friday    | 12/6/19 | Fall Awards Night – Football<br>Cheerleading | 6:30    | Café/Auditorium        |
| Wednesday | 2/12/20 | Spring Sports Sign-Ups                       | Lunches | Café                   |
| Thursday  | 2/13/20 | "  | "       | "                      |

|         |         |  |           |                 |
|---------|---------|--|-----------|-----------------|
| Tuesday | 3/3/20  | Monty Tech Spring Coaches Meeting  | 5:00 p.m. | Rm. 650         |
| Tuesday | 3/10/20 | Spring - "Meet the Coaches Night"  | 6:00 p.m. | Auditorium      |
| Friday  | 3/13/20 | Winter Awards Night -<br>Boys Basketball<br>Girls Basketball<br>Ice Hockey<br>Swimming<br>Wrestling<br>Indoor Track & Field (Boys and Girls)<br>Cheerleading | 6:00 p.m. | Café/Auditorium |

**AWARD NIGHTS MAY BE IN A GROUP OR SEPARATED BY TEAMS, IF THEY CHOOSE TO DO SO**

|           |         |  |           |                     |
|-----------|---------|--|-----------|---------------------|
| Monday    | 3/16/20 | Spring Sports Start  | TBA       | Athletic Facilities |
| Wednesday | 6/3/20  | Fall Sports Sign-Ups   | Lunches   | Café                |
| Thursday  | 6/4/20  | "  | "         | "                   |
| Thursday  | 6/11/19 | Spring Sports Awards Night<br>Baseball<br>Softball<br>Boys Track & Field<br>Girls Track & Field<br>Boys Lacrosse<br>Girls Lacrosse | 6:00 p.m. | Café/Auditorium     |

**AWARD NIGHTS MAY BE IN A GROUP OR SEPARATED BY TEAMS, IF THEY CHOOSE TO DO SO.**

**DATES AND TIMES MAY CHANGE DUE TO CONFLICTS!!  
CHECK NEW CALENDAR ON OUR WEBSITE UNDER "ATHLETICS"**

**CONCUSSION COURSES  
SIGN - IN PROCEDURE**

**- GO TO: [www.montytech.net](http://www.montytech.net)**

**-CLICK ON: “Athletics” ICON**

**- AT BOTTOM OF PAGE - CLICK “Concussion Courses” ICON**

**Here you will see two courses.**

**One for students - “Concussions For Students”**

**One for parents - “Concussions In Sports”**

**- USE YOUR USER NAME AND PASSWORD FOR BOTH STUDENT AND PARENT SIGN-IN. IF YOU ARE A NEW STUDENT YOU WILL HAVE TO REGISTER. YOUR USER NAME AND PASSWORD ARE GOOD UNTIL YOU GRADUATE.**

**REMEMBER IT!!!**

**- ONCE YOU FINISH THE COURSE, DOWNLOAD THE CERTIFICATE AND DROP IT OFF AT THE SCHOOL OR BRING IT TO THE MEET THE COACHES NIGHT IN AUGUST. BOTH CERTIFICATES WILL HAVE YOUR NAME IT WITH A DIFFERENT TITLE FOR STUDENT AND PARENT.**

**DO NOT DO THE COURSE UNTIL JULY 1ST.**





## Monty Tech New Student Orientation

Tuesday, August 20<sup>th</sup> 8:30 a.m. – 12:00 p.m.

Students with Last Names A – L

Wednesday, August 21<sup>st</sup> 8:30 a.m. – 12:00 p.m.

Students with Last Names M – Z

Wednesday, August 21<sup>st</sup> 6:00 – 7:30 p.m.

Parent Orientation

Please contact Donna Schaff at (978) 630-9200 x 5235 if you are unable to attend your scheduled day